



Photo: WaterAid/Saskia van Zanen



Building Equity into Climate Resilience – the Critical Case for Gender & Social Inclusion in WaSH & WRM

WATER
&
WASH
FUTURES
2022

Water, WASH and Climate Virtual Symposium

Sharon Pondros
21 June 2022



What are the key lessons and insights of women, girls and other marginalised groups at the forefront of the climate crises?



Innovations Grant

Towards integration: Practical lessons from applying an Inclusive WASH and Climate Adaptation framework (2021)



Climatic hazards are already affecting communities, understanding these hazards, how they impact access to WASH *especially for more vulnerable groups*, and how hazards are likely to change into the future gives us an opportunity to design community approaches, systems, and O&M to be more inclusive and resilient.



A new Framework - Bringing together the best of our approaches, and adding a climate lens, integrated into the Wewak Water for Women project



Gender transformative and inclusive services, appropriate infrastructure design, systems strengthening...

Key Activities



1. Framework and tools developed, discussed, adjusted, finalised



2. Test the framework and tools with a rural community in Wewak



3. Gather and analyse evidence



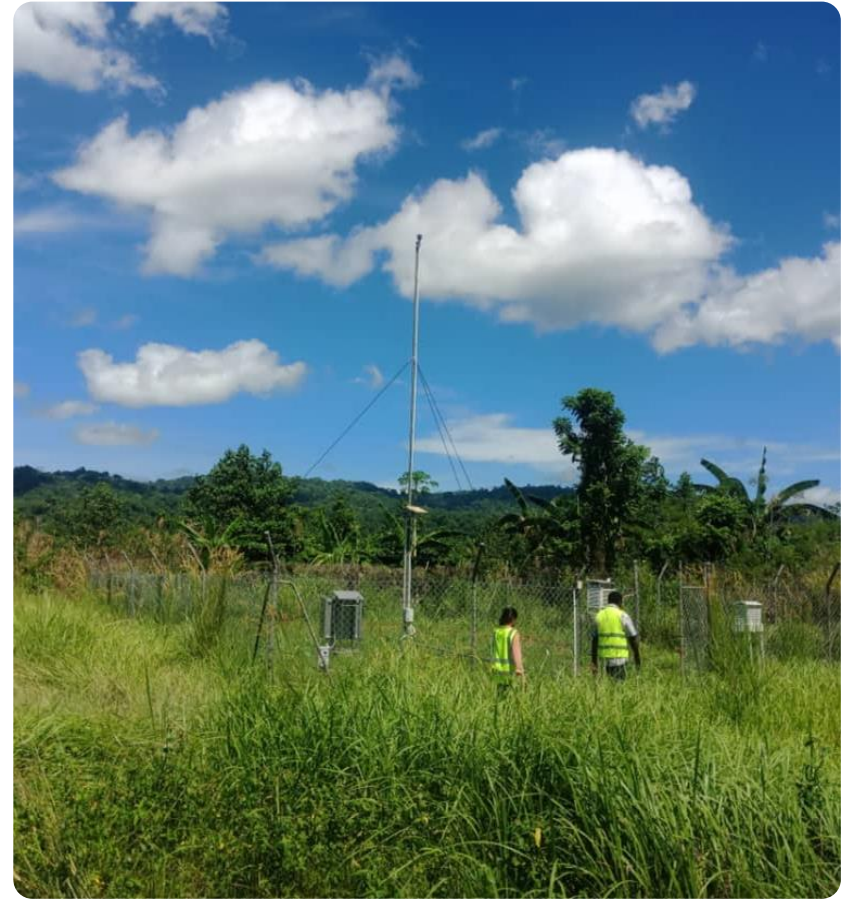
4. Use learnings to adjust framework and tools for future use in Wewak

Identify Current and Projected Climate



Class	Frequency		Score
	Present-day frequency	Expected future frequency	
High	Occurs frequently	Expected to continue to occur frequently	3
Medium	Occurs only occasionally	Expected to continue to occur either occasionally or more frequently	2
Low	Rarely occurs	Not expected to occur more frequently	1

Identify Current and Projected Climate



Community

ISF-UTS & WaterAid Community Climate

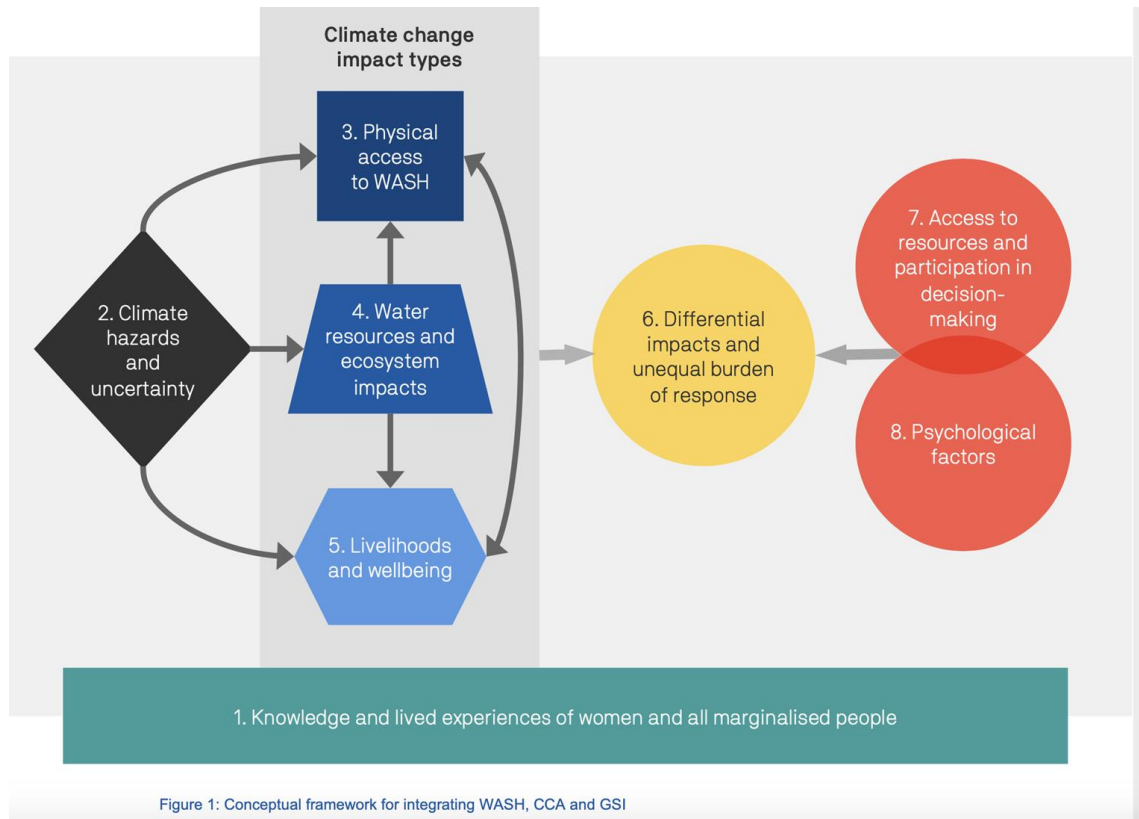


Figure 1: Conceptual framework for integrating WASH, CCA and GSI

Community

ISF & WaterAid Community Climate Resilience Tool

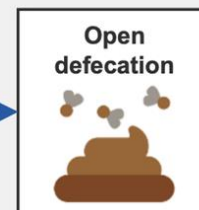
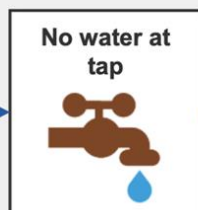


5 Community Activities

- Impact Diagram
- Who does, Who decides during climate change scenarios?
- Feedback session for community
- Identifying 5 available resources to support the community to address climate change impacts



Women's and men's groups creating Impact Diagrams



Community (Women's insights)



Identify and cost solutions (feedback)



Systems Strengthening – influencing District WASH Plan

