

Developing inclusive WASH and Integrated Water Management frameworks for practitioners

John Kelleher¹, Tom Rankin¹, Wahyu Triwahyudi¹,
Paul Satur², Isobel Davis³, Pauline Komolong⁴,
Regina Souter⁵

1. Plan International Australia; 2. Monash Sustainable Development Institute, 3. Independent consultant; 4. Live & Learn Environmental Education Australia; 5. International Water Centre, Griffith University

Solomon Islands, Papua New Guinea, Indonesia



WATER
WASH 2023
FUTURES

Achieving SDG6 in a Changing Climate



#WaWF23

Introduction

- Plan International and partner projects in Indonesia, PNG and Solomon Islands as part of DFAT's Water for Women Fund
- Initial designs and implementation focused on inclusive WASH and systems strengthening
- Over time increasing interest in incorporating climate resilience



Community-based Water Security Improvement Planning (CWSIP) guide for Solomon Islands

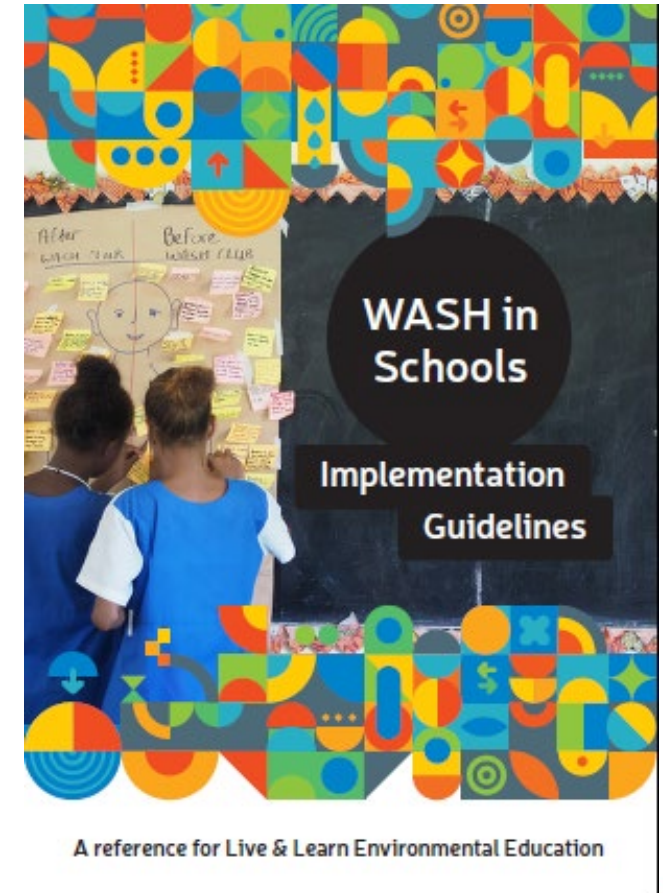
- Supports community-led water management through knowledge sharing and a practical process
- Promote 'access for all' and considers WASH inequalities in water management
- Provides a risk-based approach to community-led water management, including risks related to climate change



<https://livelearn.org/resources/community-based-water-security-improvement-planning-solomon-islands/>

School WASH assessment and planning

- Based around UNICEF's 3-Star Schools approach
- Bottom up capacity building and risk-based approach
- Bottleneck analysis and action planning includes modules related to climate change



<https://livelearn.org/resources/wash-in-schools-implementation-guidelines/>

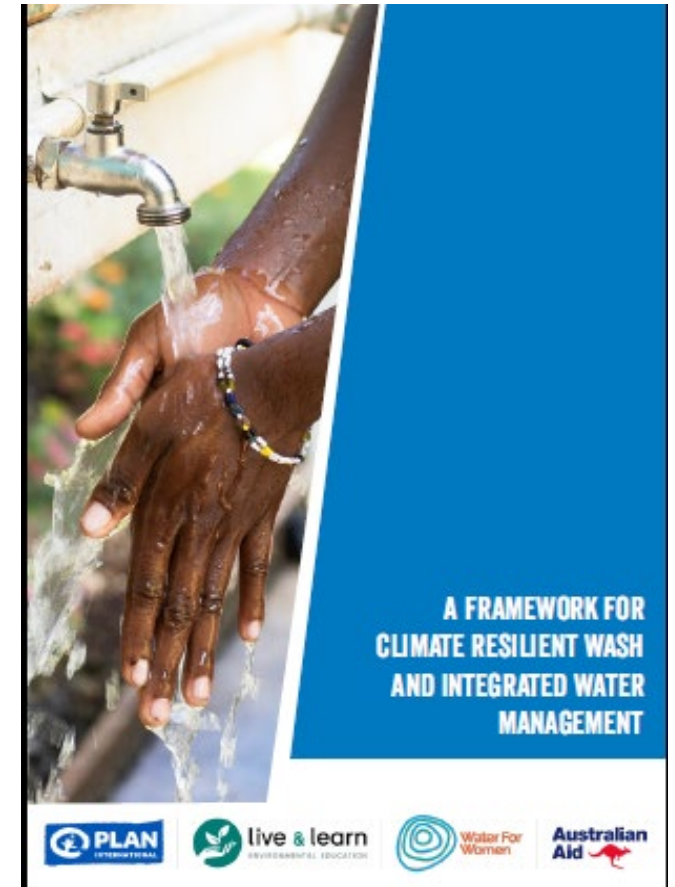
Multi-stakeholder Integrated Water Management planning and coordination forum - Indonesia

- Sumbawa district, NTT province, Indonesia:
- Research/pilot project to bring a systems-wide approach and framework to water resources planning and management
- Facilitated a stakeholder-led process to develop an inclusive, climate risk informed, IWM framework



Climate Resilient WASH & IWM Framework

- Aligned to Plan International global guidance on resilience programs
- Drawing on learning from implementation and regional/international knowledge
- Developed a set of 8 principles and 6 processes to inform approaches to climate resilient WASH and IWM

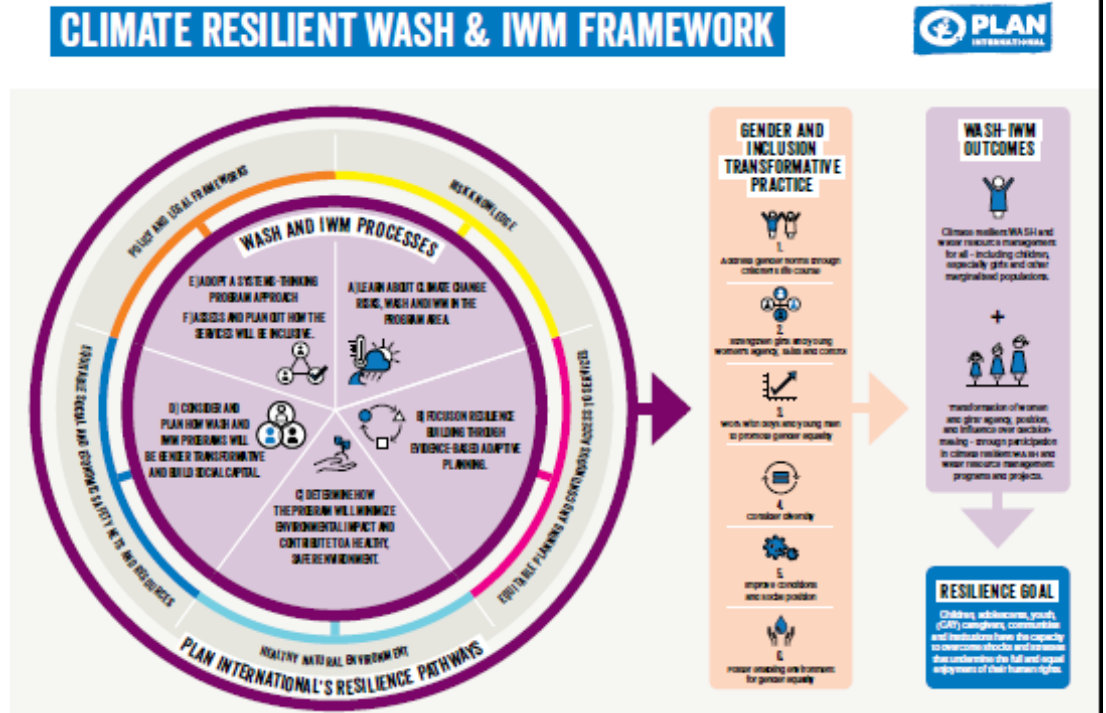


<https://www.plan.org.au/publications/a-framework-for-climate-resilient-wash-and-integrated-water-management/>

Climate Resilient WASH & IWM Framework

Box 2: Core principles for practitioners to achieve climate resilient WASH and IWM for all

- Risk identification and management is fundamental for planning climate change resilient infrastructure and services.
- Adaptive planning should be prioritized to ensure multi-level resilience of systems, livelihoods, communities and people.
- Resilience should be established through evidence-based decision-making and applying the principle of sustainability to WASH and water management behaviours, services and systems.
- Local tradition, knowledge and culture need to be an integral part of all climate resilient WASH and IWM program and project processes.
- All stakeholders should be represented and involved in an inclusive, participatory and safe way in project planning, decision-making and delivery.
- Processes need to acknowledge and systematically address inequalities within and between communities.
- WASH and IWM resilience approaches should prioritise women and girls and be gender transformative.
- Resilient water security for all means that whole WASH and IWM systems should be considered, and notably the environmental, governance, economic and cultural/social aspects of the system.



Climate resilient WASH and IWM refers to WASH and IWM systems, infrastructure, services and behaviours that can mitigate risks and anticipate, resist, absorb, cope with, adapt to, transform and recover from climate change hazards and ensure continued access and availability of WASH for people's daily needs.

Next steps under Water for Women Fund phase II

- Review and refine CWSIP and WinS materials to strengthen climate change inclusion
- Incorporate climate change into WASH FIT materials used for work in Health Facilities.
- Support WASH-IWM forum establishment in Manggarai district, Indonesia
- Program implementation guide to accompany Climate Resilient WASH-IWM Framework



CWSIP:

<https://livelearn.org/resources/community-based-water-security-improvement-planning-solomon-islands/>

WASH in Schools Implementation Guidelines:

<https://livelearn.org/resources/wash-in-schools-implementation-guidelines/>

Climate Resilient WASH & IWM Framework:

<https://www.plan.org.au/publications/a-framework-for-climate-resilient-wash-and-integrated-water-management/>

For further information please contact:

John Kelleher, Senior Program Manager WASH

Plan International Australia

John.Kelleher@plan.org.au

