

Shifting social norms for inclusive, resilient and sustainable behaviour change

Prepared by Sue Cavill

Delivered by Joanna Mott and Aleisha Carroll

Water for Women

Australia

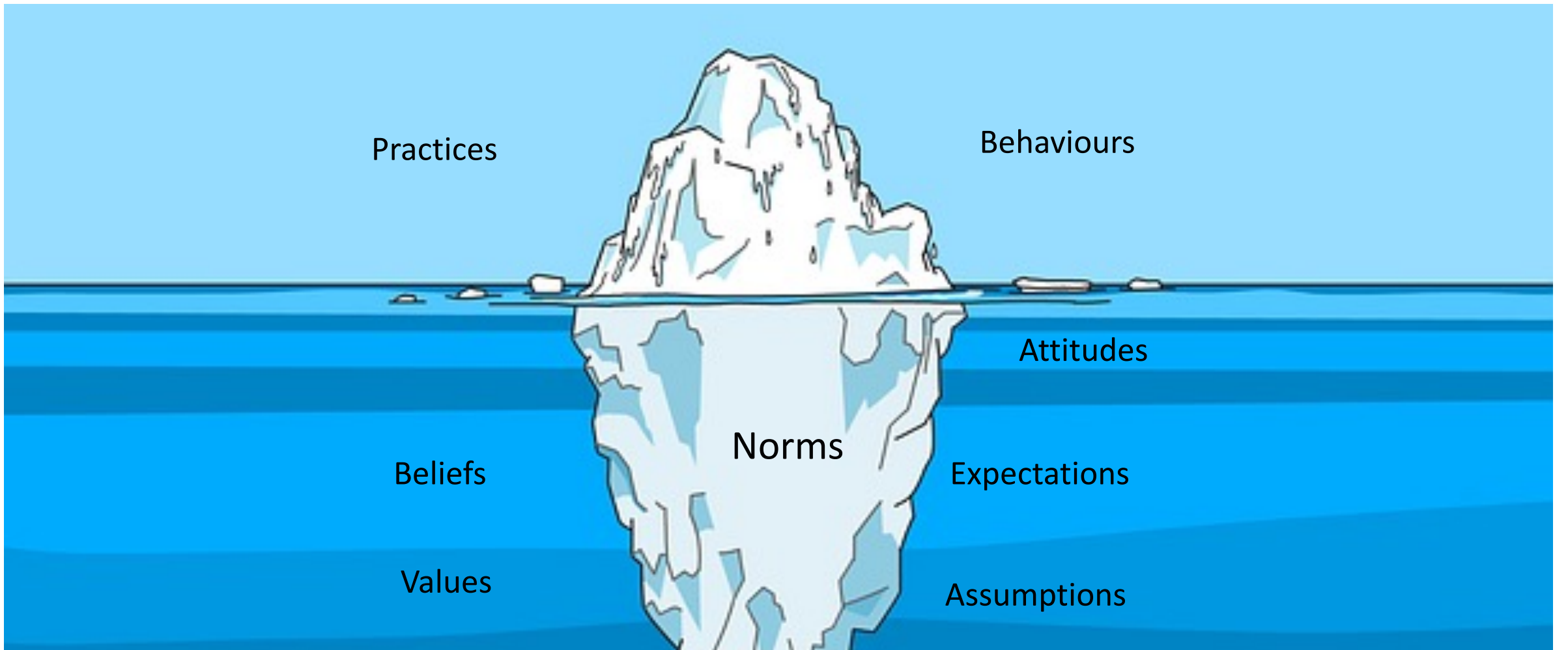


WATER
& WASH 2023
FUTURES

Achieving SDG6 in a Changing Climate

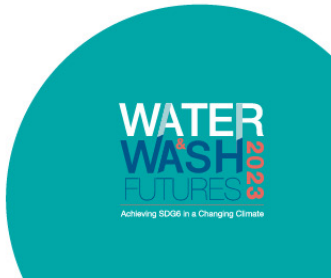


#WaWF23



Adapted from 'Cultural Iceberg' model, developed by Gary Weaver (1986)

Surfacing the Invisible



Social norms related to WASH



Ensure availability and sustainable management of water and sanitation for all

“Jobs in the WASH sector are not for women – they do not have the skills and confidence to lead.”

“People with disabilities cannot live independent lives because they need help with everything”.

“Menstruation is taboo, so menstruating girls should not leave home.”

“It is not ‘masculine’ to provide care to children”

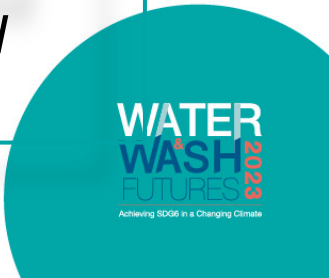
“Women can provide voluntary community services during their ‘free time’”

“Water collection is the responsibility of girls & women”

“Trans-women should not queue with women to collect water”

“Girls should drop out of school when they start menstruating”

“People with disabilities should not participate in community WASH decision making”

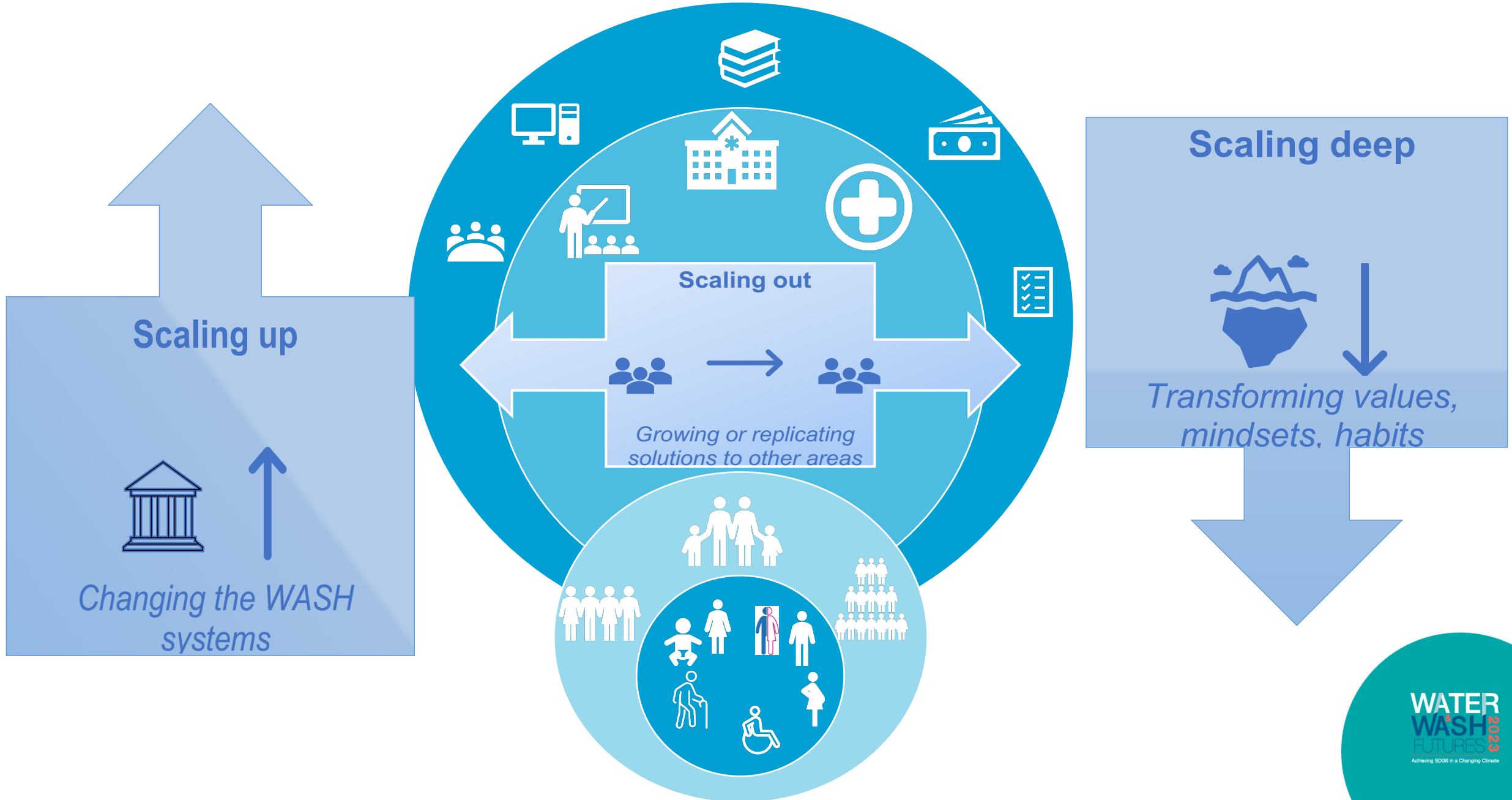


Why does a norm change focus matter to water and WASH?

- Our WASH behaviours are influenced by our social networks and by our beliefs, values and attitudes.
- Social norms-centric WASH programming can:
 - Result in more sustainable and resilient WASH outcomes
 - Be a critical enabler for empowerment and equality for women, men, gender-diverse and trans people, people with disabilities, people living in poverty and other marginalised groups.



How do we achieve norms change?



How?

WASH systems level

Institutional level

Community level



How?

WASH systems level



WaterAid and East Sepik Council of Women partnering to raise awareness on gender based violence and WASH issues, and supporting integration into district WASH planning and the Department of Health's Healthy Islands program.



Embed new norms in sector building blocks, including supporting RHO engagement: institutions, policy, planning, budgets, regulation, monitoring, learning

How?

Institutional level



Working with local, traditional and religious leaders in community-led change to harmful practices

SNV Nepal - Support and training for local self-help groups, men at the community and household levels, as well as local government, to transform gendered division of labour and raise awareness of and de-stigmatize menstruation, and combat any residual Chaupadi practices outlawed in 2017

How?

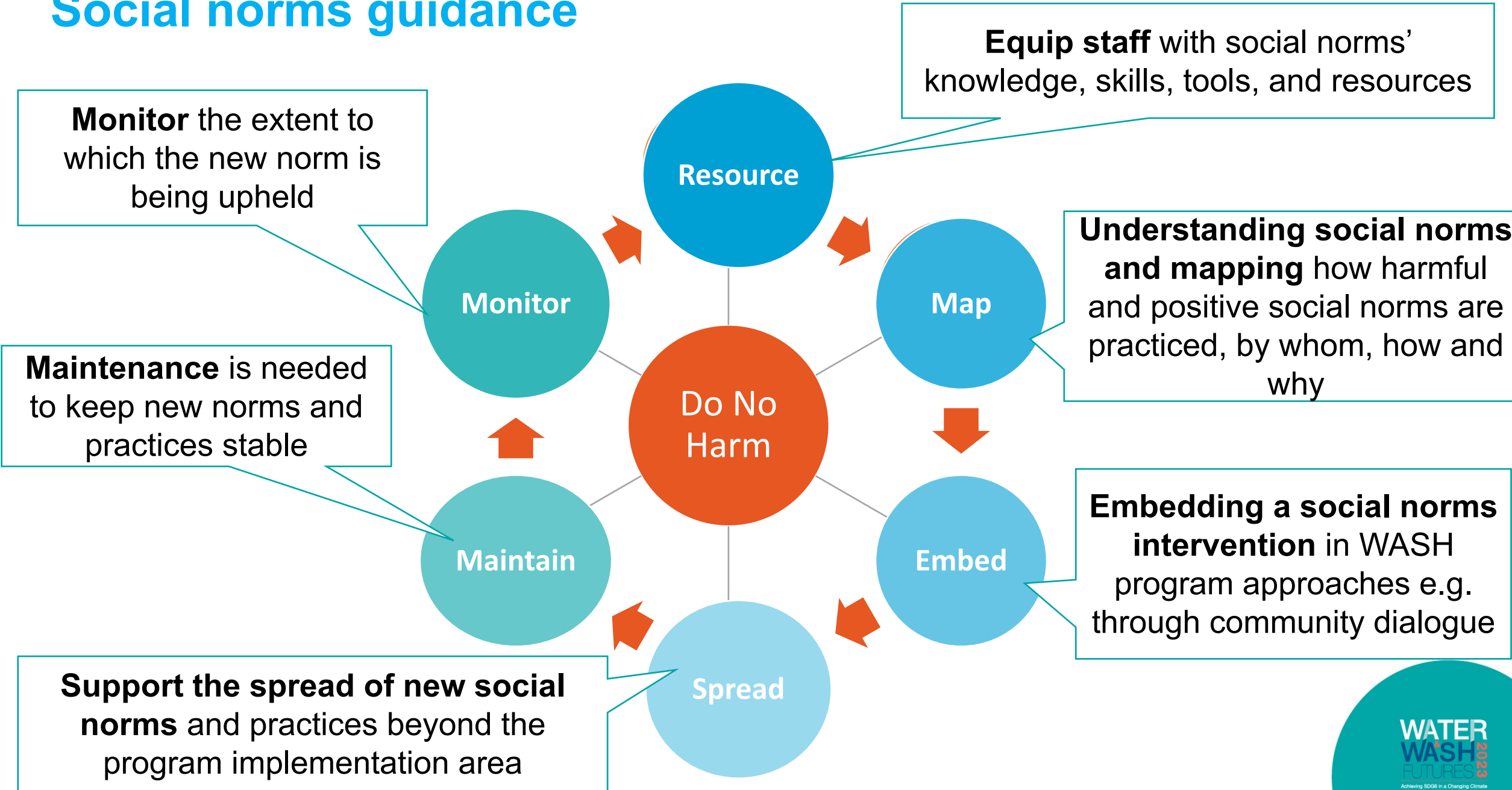
Community level

World Vision Bangladesh - Initiated a MenCare approach, which targets couples to challenge gendered roles related to WASH with the aim of increasing equity and sharing the burden of WASH related tasks.

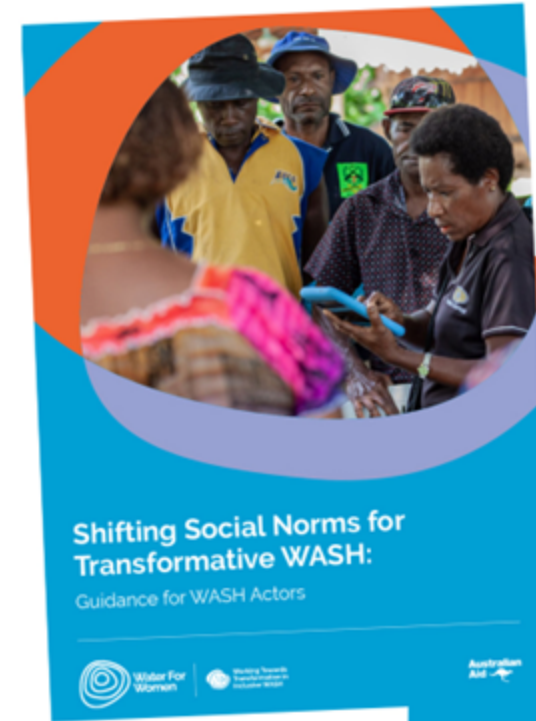


Spreading new social norms (e.g. masculinity and parenting) through peer support and community dialogue

Social norms guidance



Shifting Social Norms for Transformative WASH: Guidance for WASH Actors



www.wfw.fund/ShiftingNorms

Access now

