

SUVA

Climate Resilience Pathways:

Water Security and WASH in Asia Pacific

What next for the Climate, GEDSI and WASH Nexus?

THURSDAY 1ST MAY
11:00AM - 1:00PM

Hosted by Milika Sobey, Senior Technical Advisor GIZ
Pacific



Water For
Women

Australian
Aid 

giz



GREEN
CLIMATE
FUND



UNDRR
UN Office for Disaster Risk Reduction



WORLD BANK

Green Climate Fund Sanitation Annex

Bapon Fakhruddin, Green Climate Fund



Climate-resilient sanitation in the Green Climate Fund


CLIMATE RESILIENT SANITATION COALITION

HOW TO DEVELOP

a **climate-resilient sanitation (CRS) project proposal** for the **GREEN CLIMATE FUND**


Find out ... who can apply for GCF funding

Read ... the official annex on CRS in GCF's water security guide



STEP 1 Define a vision i

Develop a vision statement prioritizing the climate challenge your sanitation project or activities address while acknowledging related social and environmental issues. Keep in mind GCF's climate focus, CRS approach, investment criteria, and key strategies.



STEP 2 Articulate the mitigation or adaptation impact of your project i


Develop a strong climate science rationale by demonstrating how your CRS project contributes to climate adaptation or mitigation. Use clear data and evidence and ensure that climate-related activities are distinct from other development components.

Develop a climate risk assessment

... to contextualise adaptation activities

Map emissions


... to identify sources for reduction



STEP 3 Identify priority measures and strategies i

Develop measures to address climate risks, and/or cut emissions, and maximize sustainable development. Actions should align with stakeholder priorities, policies, and promote cross-sectoral coordination for scalable solutions

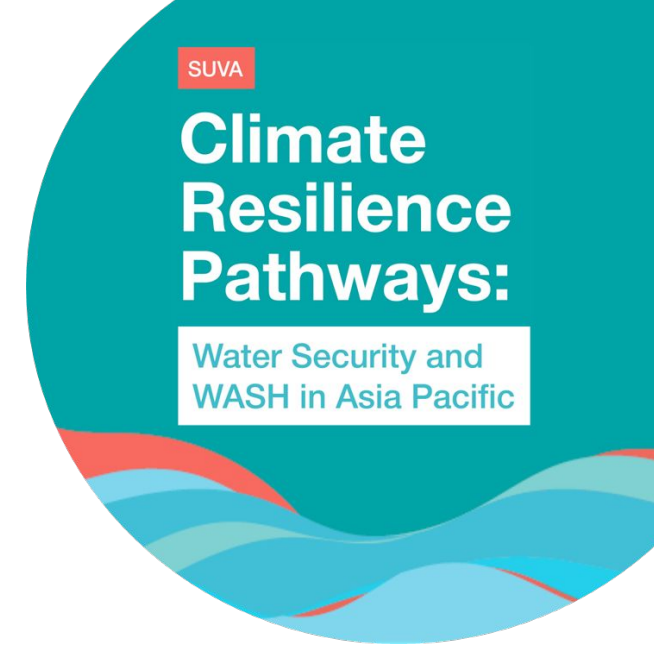
See guidance ... on concrete adaptation, mitigation and systems strengthening measures across the sanitation service chain



STEP 4 Budget development i

Demonstrate the value-for-money of proposed activities, emphasizing scalability, efficiency, long-term viability and country ownership (NAPs and NDCs). Distinguish between budgets for climate-related initiatives and broader development activities.

A case study on Inclusive Resilient WASH project implemented in Wewak District, Papua New Guinea



Winnie Sagi

Snr. Environmental Health Officer, East Sepik Provincial Health Authority, PNG



What is Community Resilience?

- ❑ **Community resilience** – refers to the ability of a community to withstand, adapt respond to, and recover from adverse events, including natural disasters and health crises (WHO).
- ❑ It focuses on enhancing the day-to-day health and wellbeing of communities to reduce the negative impacts of disasters.
- ❑ During a disaster or in the aftermath of climate impacts, **resilient communities** have systems in place to prevent **waterborne diseases**, provide **emergency sanitation** and **promote hygiene practices** to reduce the spread of disease.

Why 'Community Resilience' matters in climate, GEDSI and WASH?

- ❑ **Sustainability:** It enables communities to not only **survive** but **thrive over** the long term, despite environmental or social challenges.
- ❑ **Equity: Promoting GEDSI:** community resilience ensures that everyone has the same opportunities to contribute to and benefit from recovery regardless of ability or social status or gender
- ❑ **Health and Well-being: WASH:** directly impacts health and quality of life by reducing disease and promoting better hygiene practices.
- ❑ **Reduced Vulnerability:** Communities that are resilient are better prepared for future crises, which can **reduce the loss of life, economic impacts, and long-term setbacks.**

Implemented Strategies from the Case Study

- ❑ Focused at engaging Right Holders Organization (RHO's) in Wewak District; **East Sepik Council of Women (ESCOW)** and **East Disable Persons Agency (ESDPA)** with training using the **Healthy Village Manual**.
- ❑ Aimed at empowering the RHOs to train communities in mobilizing and using locally available resources to improve access to WASH in the face of climate change.
- ❑ Facilitated by ESPHA with support from WaterAid.
- ❑ Started in 2023 with ToT training for RHOs, rolled to 9 x communities.
- ❑ Periodic monitoring, evaluation and learnings

Overview of the modules

Module 1: Community Assessment

Module 2: Community Led Total Sanitation

Module 3: Community Based Water Resource Management (CBWRM)

Module 4: Healthy Village

Module 5: Monitoring Tools



Healthy Villages: Community WaSH Engagement	Module 1
	
	Pre-intervention community assessment
	WaterAid

Key Activities in the Modules



Module 1: Pre-intervention community assessment; introduction, safe guarding, community profile, village mapping, understanding of WASH, WASH barriers and Community WASH Management structures

Module 2: Community Led Total Sanitation (CLTS); importance of sanitation, community defecation mapping, defecation area transect walk. Trigger disgust, stool calculation, medical expenses calculation, community action planning and story telling by PWDs using 'Inclusive WASH Elinchart'

Module 3: Community Based Water Resource Management (CBWRM); Water cycle, water point mapping, water quality testing, GEDSI and inequality in WASH, division of labour, climate change impact, triggering collective action and setting up Village Health Development Committee (VHDC)

Module 4: Planning for a Healthy Village; importance of healthy village, discovering our purpose, identify community's vision, power of story, river crossing role play, healthy and unhealthy attitudes, family & sexual violence, referral pathways, using own resources, community action planning and monitoring checklist

Module 5: Supporting implementation and monitoring of community plans; progress update meeting with community leaders, identifying and recognizing champion households, health center staff presentation, stories of change,

Positive Outcomes

- **Improved Public Health** : Access to clean and safe WASH practices reduces risk of waterborne diseases, leading to healthier communities and lower healthcare costs
- **Social inclusion**: Marginalized groups including women, children, and PWDs have access to essential services, fostering equality and empowerment.
- **Economic Development**: Improved WASH infrastructure boosting local economies by enhancing productivity, as healthier population can work more effectively.
- **Enhanced Community Engagement**: Involving community members fosters a sense of ownership and making communities more resilient in facing challenges.
- **Adaptive Capacity**: Communities are prepared for and respond to climate change impacts, ensuring that WASH Systems can withstand extreme weather events.
- **Education and Awareness**: Involves education that promotes long-term behavior change and community benefits.
- **Increased Access to Resources**: Improves water availability in times of extreme

Going Forward...



- **Integrating Policies and Frameworks:** Collaboration between Climate policies, GEDSI initiatives and WASH programs at all levels.
- **Inclusive Community Engagement :** Active involvement of women, marginalized groups and PWDs in the planning and decision- processes.
- **Capacity Building and training :** Invest in training programs that enhance skills of local communities and stakeholders.
- **Financing Solutions:** Explore innovative funding mechanisms that support inclusive and climate -resilient WASH projects at the community level.
- **Research and data collection:** Encourage disaggregates data by gender, disability, and social status to identify specific needs and monitor progress in the nexus of climate, GEDSI and WASH.
- **Adopting sustainable technologies:** Advocate for adoption of affordable, sustainable and climate- resilient technologies in WASH infrastructure.
- **Partnership and Collaboration:** Foster multi-sectoral partnerships among governments, NGOs, private sectors and community - based organizations to share knowledge, resources and best practices.
- **Monitoring and Evaluation Mechanisms:** Establishing frameworks for monitoring and evaluating the impact of initiatives on climate resilience, GEDSI, and WASH to track progress and adapt strategies as needed by responsible Government agencies.

References



- The Criticality of GEDSI for Climate-Resilient WASH, Water for Women, 2025
- https://aspr.hhs.gov/at-risk/Pages/community_resilience.aspx
- <https://www.who.int/news-room/fact-sheets/detail/climate-change-and-health>
- Linkages between WASH, climate change, food security and ecosystems / nature-based solution; WaterAid, November 2024
- ASIA AND THE PACIFIC SDG PROGRESS REPORT 2025: Engaging communities to close the evidence gap; United Nations, 2025

UN Disaster Risk Reduction

Gabrielle Emery

Head of Pacific Sub-Regional Office



World Bank

Christian Severin

Senior Water Specialist



<https://www.youtube.com/watch?v=2iAysWgHjfl>

Water for Women

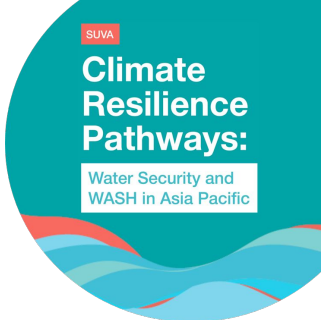
Zahra Bolouri

Knowledge and Learning Manager



Plan International and Live & Learn
in Solomon Islands

The Value and Contribution of Research



The Value and Contribution of Research:

Water for Women 2018–2024

Introduction

Water for Women (WfW) is unique in its role as both a water, sanitation and hygiene (WASH) implementation and research Fund that contributes to regional and global understanding of best practice in climate-resilient, gender equitable and socially inclusive development.

This brief documents the value and contribution of research that was designed and integrated with the actions of other actors to achieve targeted WfW outcomes during 2018–24. It draws on internal reports and 20 interviews with 35 WfW stakeholders from the Fund Coordinator, research and civil society partner organisations, and government. The findings were discussed and validated at the final WfW Fund event in October 2024.

In Brief

There is **significant value in research partnerships**, contributing to improved processes and outcomes and generating **catalytic value** beyond the initial investment and the WASH sector. They also:

- Facilitate **practical, grounded implementation support, rigour and depth, robust ethics and inclusion approaches, and two-way capacity development.**

- Contribute to **evidence-based planning and policymaking, thought leadership and innovation, and leverage their independence, convening power and networks to progress common objectives.**

- **\$16.5 million invested in 35 research projects** during 2018–24.
- Huge breadth in research type (**applied, action, participatory, transdisciplinary and formative research**, either led by research organisations with local research partners, and / or conducted in partnership with CSOs) and level of engagement and influence (community, provincial, regional, national, global).
- **More than 50 organisations in 16 countries**, including local and international CSOs, universities, research institutes, rights-holder organisations and government representatives, were directly involved in the 35 projects.
- Researchers contributed **thought leadership and innovation, rigour and depth**, a robust ethics and inclusion approach, **evidence-based policymaking and practice**, independent convening power, networking, localisation and capacity development.
- **303 knowledge products were published**, including **82 journal articles**, and 25 in-person or online WfW learning exchanges held.





Access now



LEARNING BRIEF

Value of research



The Value and Contribution of Research:

Water for Women 2018-2024

Introduction

Water for Women (WfW) is unique in its role as both a water, sanitation and hygiene (WASH) implementation and research fund that contributes to regional and global understanding of best practice in climate-resilient, gender equitable and socially inclusive development.

This brief documents the value and contribution of research that was designed and integrated with the actions of other actors to achieve targeted WfW outcomes during 2018-24. It draws on internal reports and 20 interviews with 35 WfW stakeholders from the Fund Coordinator, research and civil society partner organisations, and government. The findings were discussed and validated at the final WfW Fund event in October 2024.

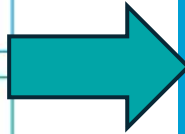
In Brief

There is significant value in research partnerships, contributing to improved processes and outcomes and generating catalytic value beyond the initial investment and the WASH sector. They also:

- Facilitate practical, grounded implementation support, rigour and depth, robust ethics and inclusion approaches, and two-way capacity development.
- Contribute to evidence-based planning and policymaking, thought leadership and innovation, and leverage their independence, convening power and networks to progress common objectives.



Investment in Research



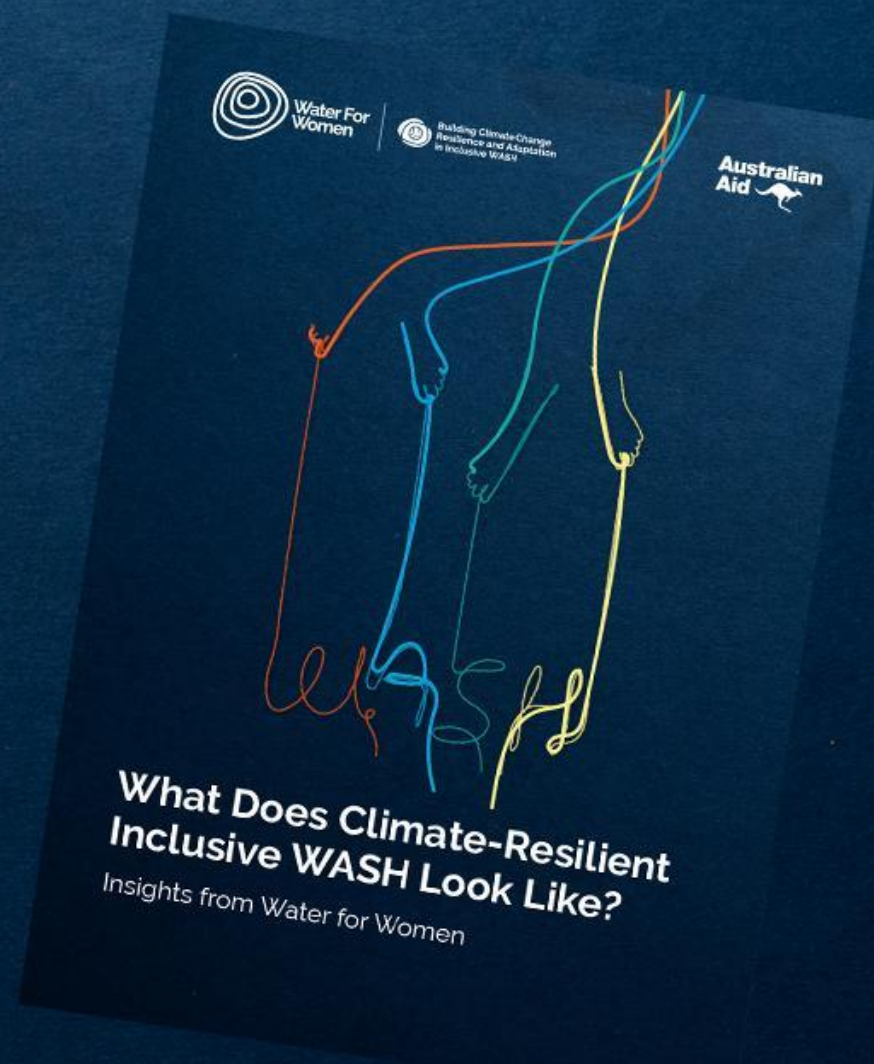
Strengthened use of **new evidence, innovation and practice** in climate-resilient, sustainable, gender-sensitive and inclusive WASH by CSOs, national and international WASH

Research Contributes to ...

1. Thought leadership and innovation; exploring important questions, creating new knowledge.
2. Rigour and depth for climate resilient development, knowledge and practice.
3. Evidence-based policymaking and practice and transferring knowledge; research informs and changes policy and practice.
4. Practical, grounded implementation support through partnerships; researchers and practitioners work together to strengthen practice.
5. Localisation; research partnerships allow engagement and collaboration with local ROs and partners to build locally led, contextualised approaches and networks. Two-way learning.
6. Catalytic value beyond the initial investment; including through sharing research results in regional and global fora and beyond the WASH sector.

What does Climate-Resilient Inclusive WASH Look Like?

Access now



Key Takeaways from Water for Women's Learning Agenda

Inclusive WASH is essential for climate-resilient WASH development

Climate-resilient WASH systems are only possible when GEDSI principles are applied so all community members can adapt to and withstand climate events.

Adaptable systems and inclusive governance are vital

Climate risk management must be embedded into existing governance structures and diverse voices must be part of decision-making to promote sustainable, resilient WASH practices that reduce risks for marginalised communities.

Climate resilience must be embedded in all phases of WASH programs

WASH programs should incorporate climate risk and resilience into planning, budgeting, design and monitoring processes from the outset to foster long-term sustainability, adaptability and transformation.

Key Takeaways from Water for Women's Learning Agenda (cont.)

Women and marginalised groups offer vital knowledge, capacities and resilience from lived experience

They must be recognised and empowered through transformative approaches that enable greater access and decision-making power.

Cross-sector collaboration supports climate-resilient WASH

Collaboration for evidence generation, design, implementation, and new ways of resourcing (including blended and climate finance) are essential to meet increasing needs, scale up climate-resilient WASH innovations, and support local adaptive capacities.

Access all publications



#CRPwater2025