

SUVA

# Climate Resilience Pathways:

Water Security and WASH in Asia Pacific

## The Criticality of GEDSI for climate-resilient WASH and broader climate resilience

WEDNESDAY, 30 APRIL | 9:00-10:30AM



Water For  
Women

Australian  
Aid



# Why and how is GEDSI critical to climate resilient WASH?

**Inga Mephram**

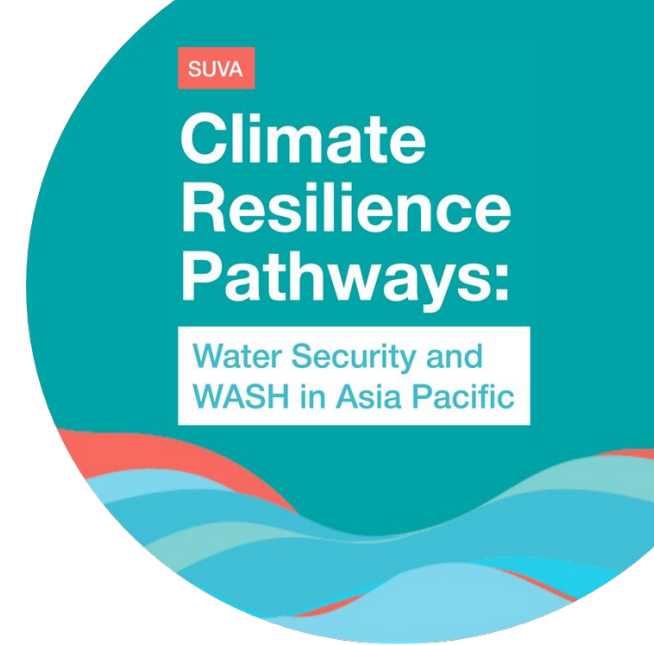
MEL Advisor, Water for Women

**Glenda Yakuna**

GEDSI Advisor, WaterAid PNG

**Turea Wickham**

WASH Coordinator, World Vision PNG



Pacific Community  
Communauté du Pacifique



# The Water for Women Learning Agenda



## What does climate-resilient inclusive WASH development look like?

1. What does climate risk and resilience mean for WASH programming?
2. How do WASH governance systems commonly integrate climate risk and resilience?
3. **Why and How is GEDSI critical to climate resilient WASH?**

# Learning Briefs

Access now



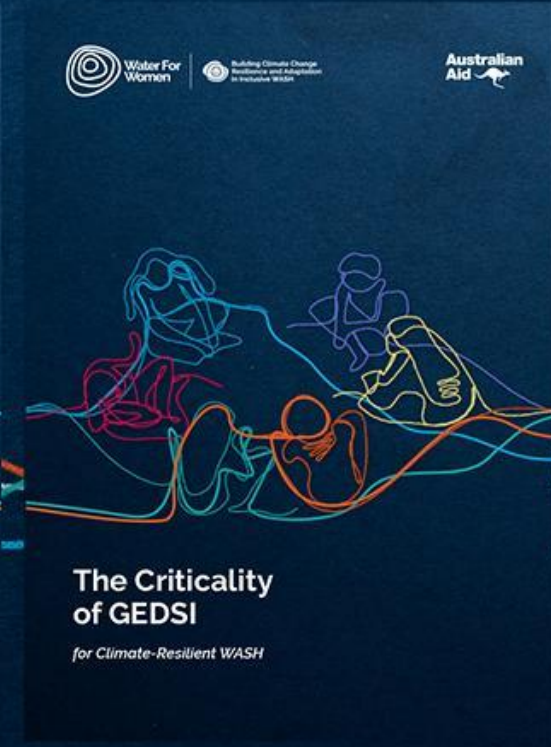
[wfw.fund/publications](https://wfw.fund/publications)



Learning Question 1.1



Learning Question 1.2



Learning Question 1.3

# Why and How is GEDSI critical to climate resilient WASH?



1. Within WASH systems, what **structural barriers** need to be removed to ensure that gendered, social and economic inequalities are addressed so that climate resilient inclusive WASH decisions benefit all?
2. What are the **pathways** that different actors are using to transfer power and progress transformation towards climate resilient inclusive WASH systems and services?
3. What are the **linkages** between inclusion, transformation and climate resilient WASH?

“Structurally disadvantaged people, who are subject to social, economic and political inequalities resulting historically from discrimination, marginality or disenfranchisement because of gender, age, ethnicity, class, language, ability and/or sexual orientation, are **disproportionately vulnerable** to the negative impacts of climate change hazards”.

*-H.O Portner et al.*

# Process for answering this question

1. **Working group:** WaterAid Australia, iDE Cambodia, SNV, UTS-ISF, icddr'b Bangladesh, London School of Health and Tropical Medicine (LSHTM), World Vision Vanuatu, Fund Coordinator team
2. **14 Fund partner project teams from 9 countries:** CFAR India, World Vision PNG, Plan and LLEE PNG, WaterAid PNG and Timor-Leste, Thrive Cambodia, iDE Cambodia, Yayasan Plan Indonesia, PNG WASH Consortium, SNV Bhutan and Nepal, IWMI Nepal, IRC Pakistan and icddr'b Bangladesh

# Key Messages



The most marginalised in communities are at the frontline of climate change hazards, uncertainty and impacts.

Transformative GEDSI considers the inherent linkages between climate change, WASH, resilience, equity and inclusion.

Inclusive and accessible WASH approaches increase coping mechanisms and adaptive capacities.

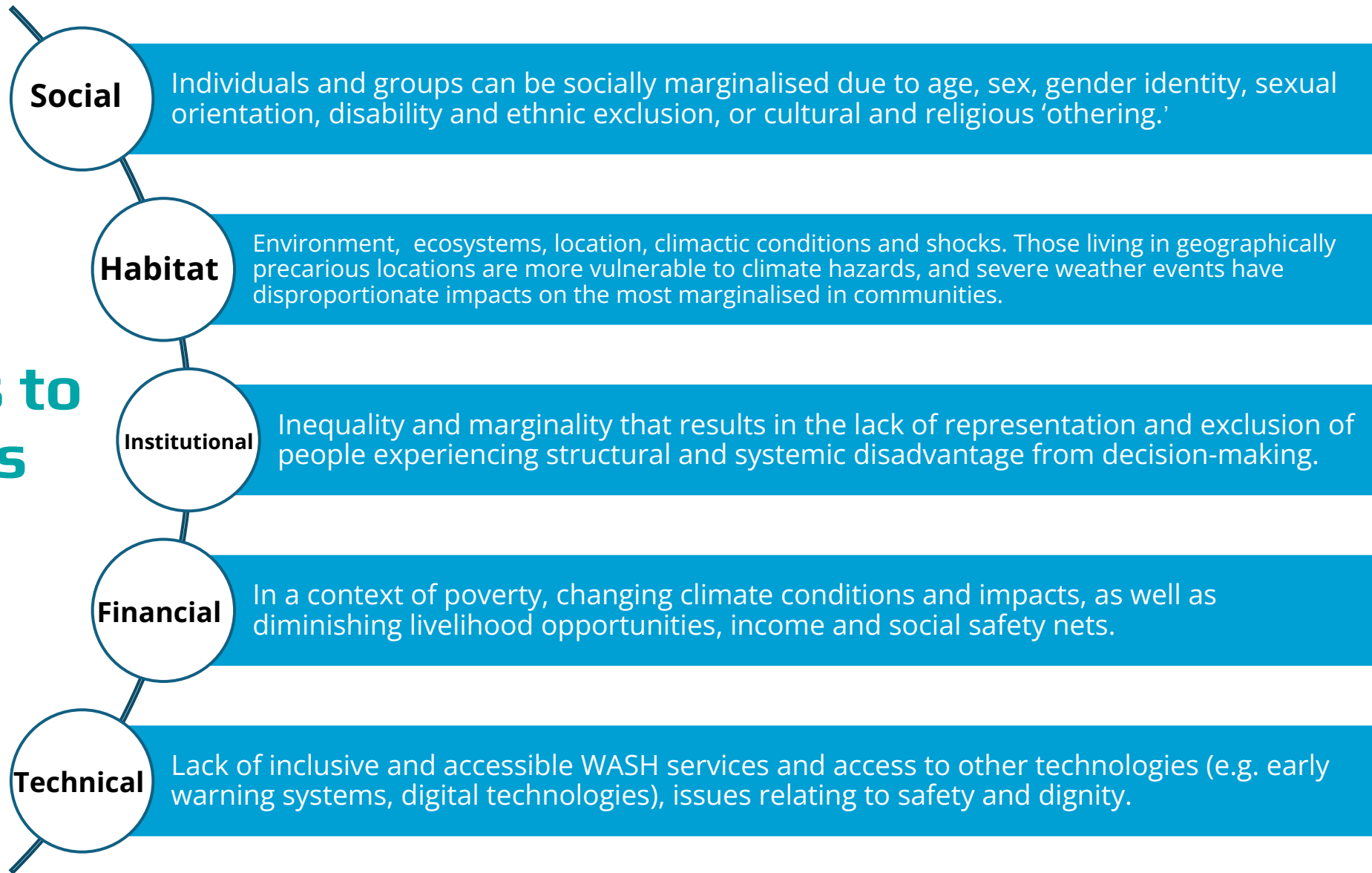
Social, habitat, institutional, financial and technical barriers to decision-making and access are compounded by climate change impacts on WASH services.

Climate risk informed and inclusive approaches built into WASH services and systems are key enablers for effective community and climate resilience outcomes.

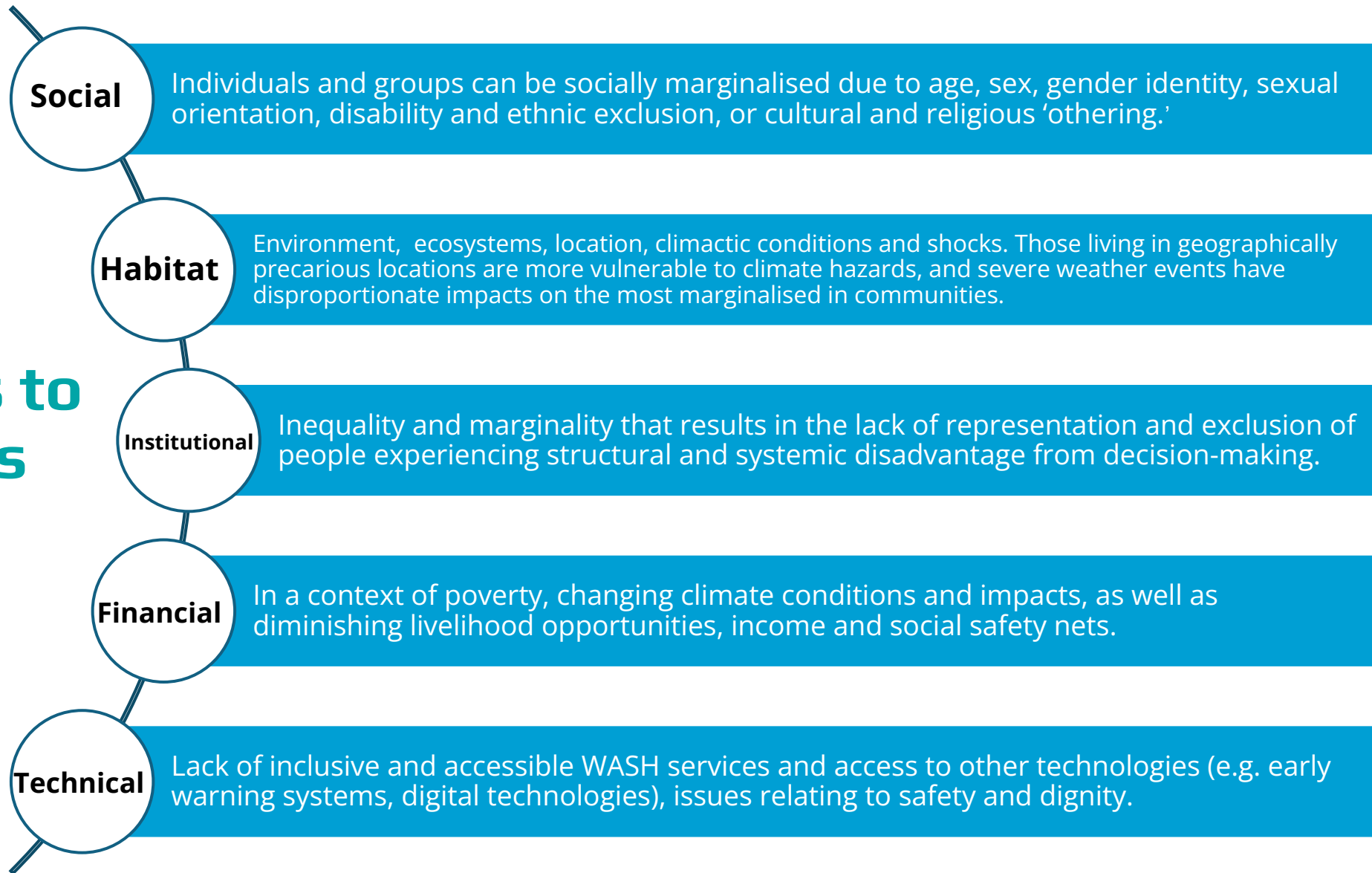
# SHIFT

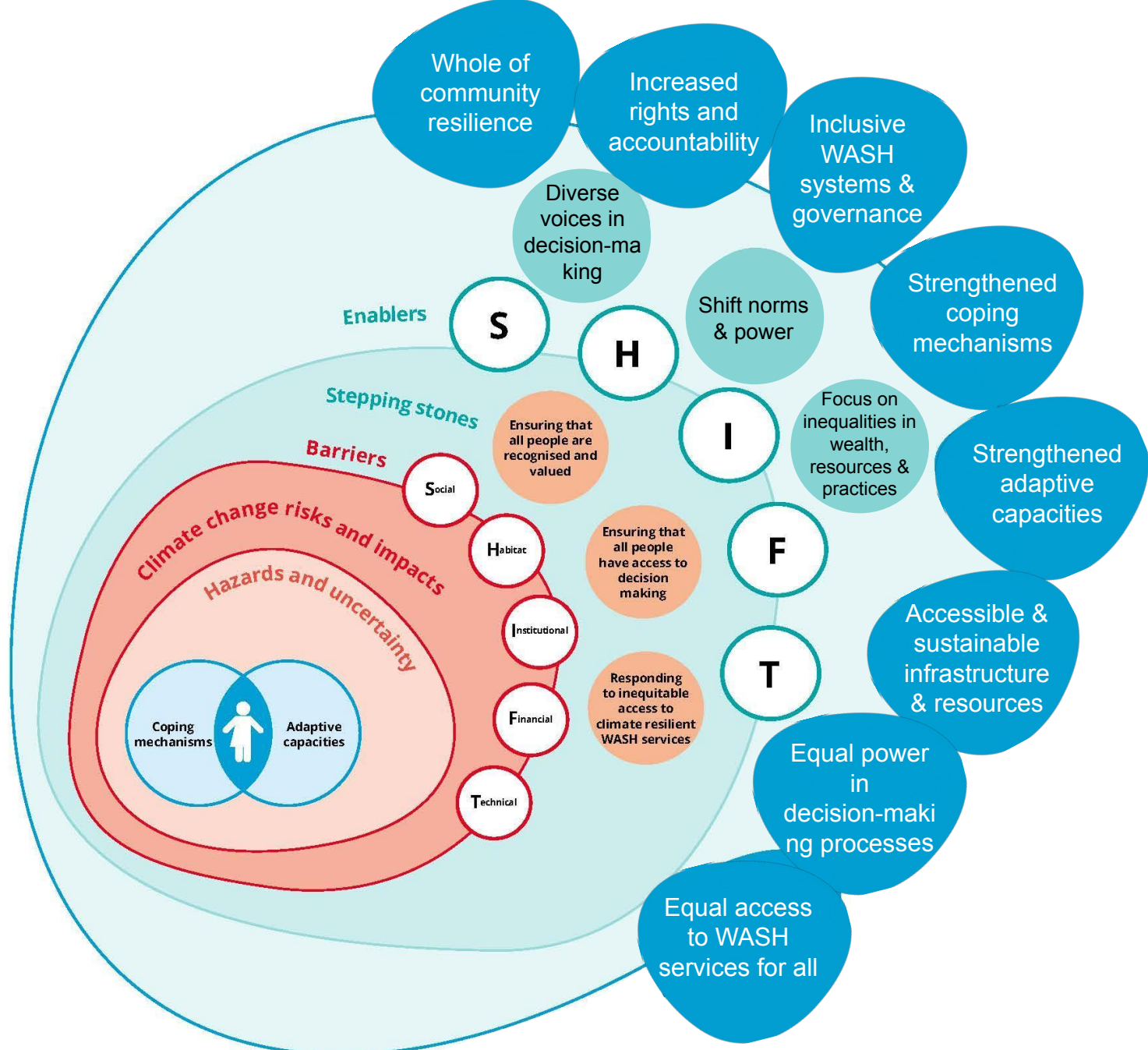
# T

# SHIFT barriers to enablers



# SHIFT barriers to enablers





Climate-resilient inclusive WASH for all

# Presenting the Presenters



1. **Iva Namela**, UNICEF, Fiji
2. **Winnie Sagui**, East Sepik Provincial Health Authority, PNG and **Glenda Yakuna**, WaterAid PNG
3. **Dibyashree Datta**, SPC, Fiji
4. **Nancy Wobo** and **Turea Wickham**, World Vision PNG



SUVA

# Climate Resilience Pathways:

Water Security and WASH in Asia Pacific

# Menstrual Hygiene Management in Schools in Fiji

Iva Bakaniceva  
UNICEF Pacific

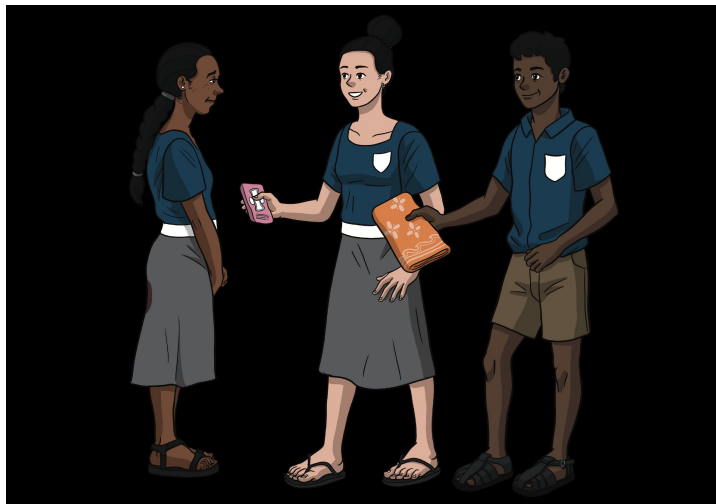


unicef   
for every child

# SHIFT in Menstrual Hygiene Management

Main target group: **Menstruating girls in school from ages 10+**

- **Hardware:** Lack of privacy, safety and security of girls including availability of water for cleansing and disposable of used sanitary pads. Accessibility to WASH facilities by girls with disability.
- **Software:** Lack of awareness and advocacy regarding menstrual hygiene management, cultural taboo regarding menstruation, stigma
- **Supplies:** MHM is not a priority in some schools and no budgetary allocation for MHM supplies in schools



# Some pathways of addressing MHM issues in schools:

## Enabling environment

- ❑ Policies and plans – Draft WASH in School Policy, Minimum Standards on WASH in Schools Infrastructure

## Service delivery

- ❑ MHM is part of the school curriculum and is taught in the classrooms, but more information and awareness is still needed to raise some “MHM Champion”
- ❑ Availability of sanitary pads – Fiji government in the 2021-2022 budget allocated a budget of 1.5 million Fijian Dollars on sanitary vouchers
- ❑ UNICEF 3 Stars WASH in School provided an opportunity for schools to address MHM issues.

# Outcomes

- Finalization of the **WASH in School Policy** and the review of the Minimum Standards Guideline for WASH in School
- Schools now **installing MHM rooms** and girls with showers and bins inside the toilet.
- Girls have **access to sanitary pads** whilst in school or during “emergency”
- **Celebration of MHM Day** is being observed in schools and communities



SUVA

Climate  
Resilience  
Pathways:

Water Security and  
WASH in Asia Pacific

# Barriers and Pathways to participation and accessibility in WASH programs

Glenda Yakuna, WaterAid PNG and Winnie Sagi, East Sepik  
Provincial Health Authority



# SHIFT Barriers to Participation and Accessibility in WASH Programs

## Social Barriers

- Exclusion of People with Disabilities (pwds) and older people
- Social and negative cultural norms excludes PwD, women and other marginalised groups from meaningful participation
- Gender norms and power dynamics.



# Pathways and Outcomes



## Pathways

### Partnerships and Cross-sector Collaboration

- Establishment of coordination body ensures engagement of RHOs and other government duty bearers in collective program planning and implementation

### Inclusive infrastructure designs

- Accessible and universal design with pwds engaged in planning, design and testing

### Effective community engagement and participation

- participatory approaches like pocket voting, FGDs, community mapping, barrier analysis sessions , inclusive WASH Flipchart trng

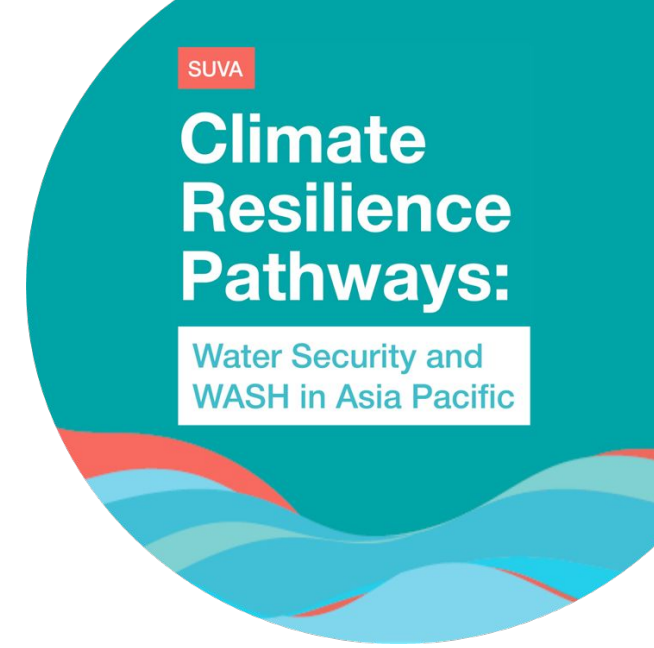
# Pathways and Outcomes



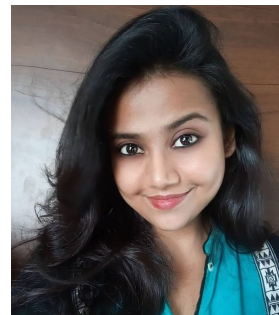
## Outcomes

- Improved participation from pwds, women and other vulnerable minorities
- Achieve universal access to WASH services at community, health care facilities and schools for everyone including pwds, children, pregnant mothers
- GEDSI concepts are incorporated into WASH programming e.g. GEDSI in WASH MIS, universal access - hand rails, ramps
- Increase knowledge and awareness - GEDSI

# Barriers and Pathways to participation and accessibility in WASH programs



Dibyashree Datta, Pacific Community, SPC



# S-H-I-F-T

## Institutional Barriers

Inequality and marginality that results in lack of representation and exclusion of people experiencing structural and systemic disadvantages from decision making



# Addressing Institutional Barriers



- Representation Matters - **at every stage.**
- Capacities and platforms ensure representation.
- Values driven engagement.
- Do not assume. **Ask.**

**: GEDSI Action Plan 2024 - 2027**

**GEDSI Actions**

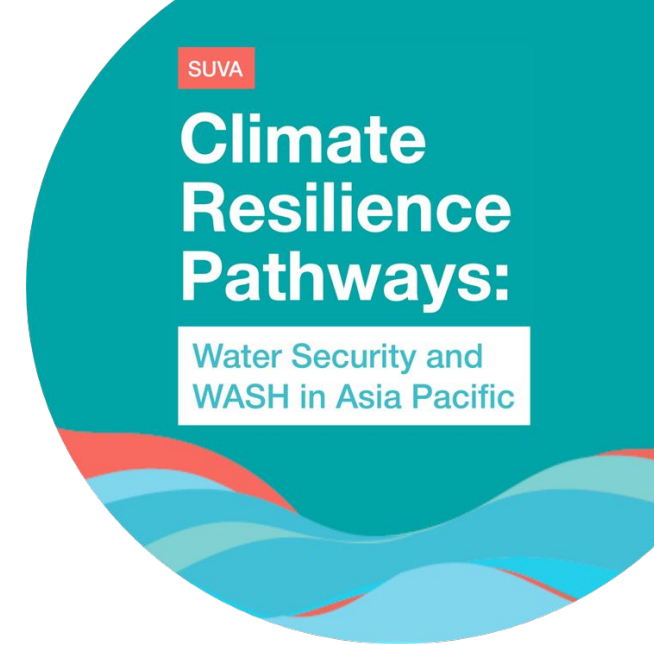
- Engage Women's Groups (Nei Baneawa & Itoiningaina)
- Provision of volunteer allowance to Women's Groups
- Monitoring activities to include GEDSI-related informa
- Additional support to PWD for device set-up, operatio
- Engage Women's Groups (Nei Baneawa & Itoiningaina)
- Different sessions for men/women?
- Feedback forms tailored to gather GEDSI info/recomm
- Review previous training feedback disaggregated by g
- MHM products/solutions?
- Pre-training meetings with women's groups in each vi
- Participant pick-up and drop-off - especially PWD.
- Timing considerations.
- Adaptation of Community WASH Training sessions to s
- Busy bees with schools to upgrade/repair WASH facilit



# Impact (What Changed?)

# Barriers and Pathways to participation and accessibility in WASH programs

**Nancy Wobo and Turea Wickham**  
World Vision, Papua New Guinea



# Structural Barriers

- Cultural practices and belief system
- Not affordable WASH infrastructures in communities
- Community Structure

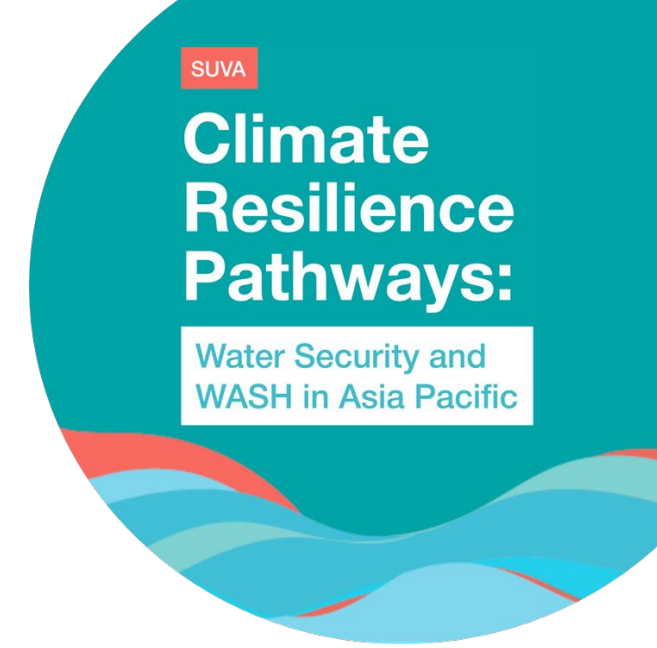
SUVA

Climate  
Resilience  
Pathways:

Water Security and  
WASH in Asia Pacific

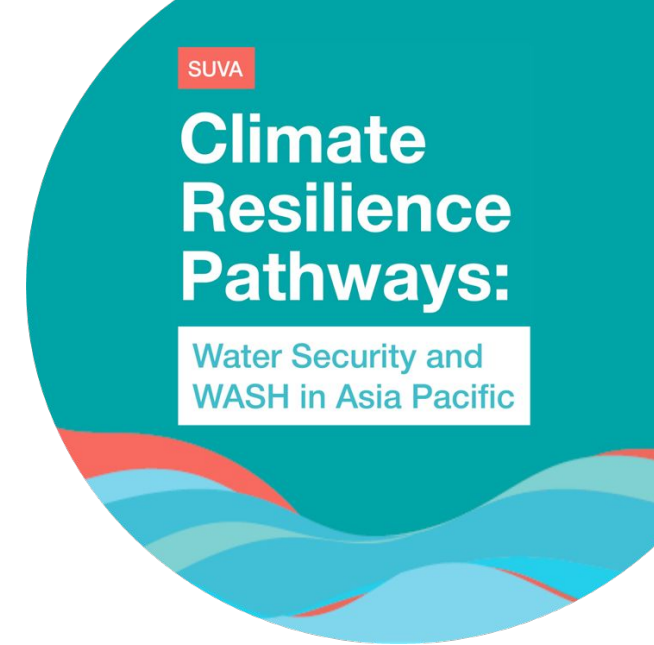
# Pathway

- Awareness and Advocacy
- Collaboration and partnership
- GEDSI self-assessment tool
- Capacity building training



# Outcomes

- Affordable inclusive WASH infrastructures
- Equal participation at Household, community and Institution
- Established GBV sector in the community structure
- Community resilient and adoption



# Showcase artifacts - Women's



# Key considerations for WASH and climate action

- GESI cannot be an add-on – it should be the starting point of program design
- Expanding the **mindsets and skills** of sector professionals and the remit of organisations can be transformative
- **Monitoring systems** to track climate risks and impacts on WASH services must be strengthened
- **Making space** for those most adversely impacted to contribute to solutions is integral
- Seeking and sharing **data and knowledge** has the potential to build resilience where it matters
- Collaborating in **meaningful partnerships** and networks is transformative.

# Learning Briefs

Access now



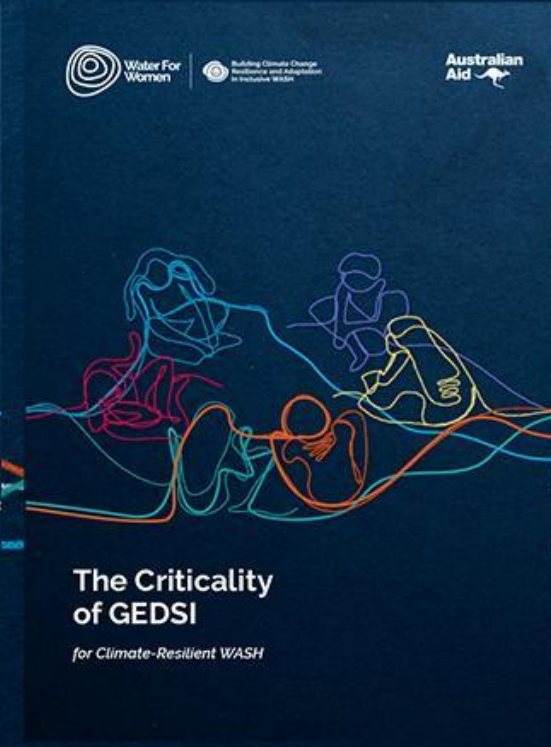
[wfw.fund/publications](https://wfw.fund/publications)



Learning Question 1.1



Learning Question 1.2



Learning Question 1.3

SUVA

# Climate Resilience Pathways:

Water Security and WASH in Asia Pacific

## The Criticality of GEDSI for climate-resilient WASH and broader climate resilience

WEDNESDAY, 30 APRIL | 9:00-10:30AM



Water For  
Women

Australian  
Aid

